

The Hindhead Nursing Home.

The Matron of the Hindhead Nursing Home, Miss Wortabet (member of the Matrons' Council) may well be proud of having attained the nearest approach to perfection which has yet been reached in England with regard to home hospitals.

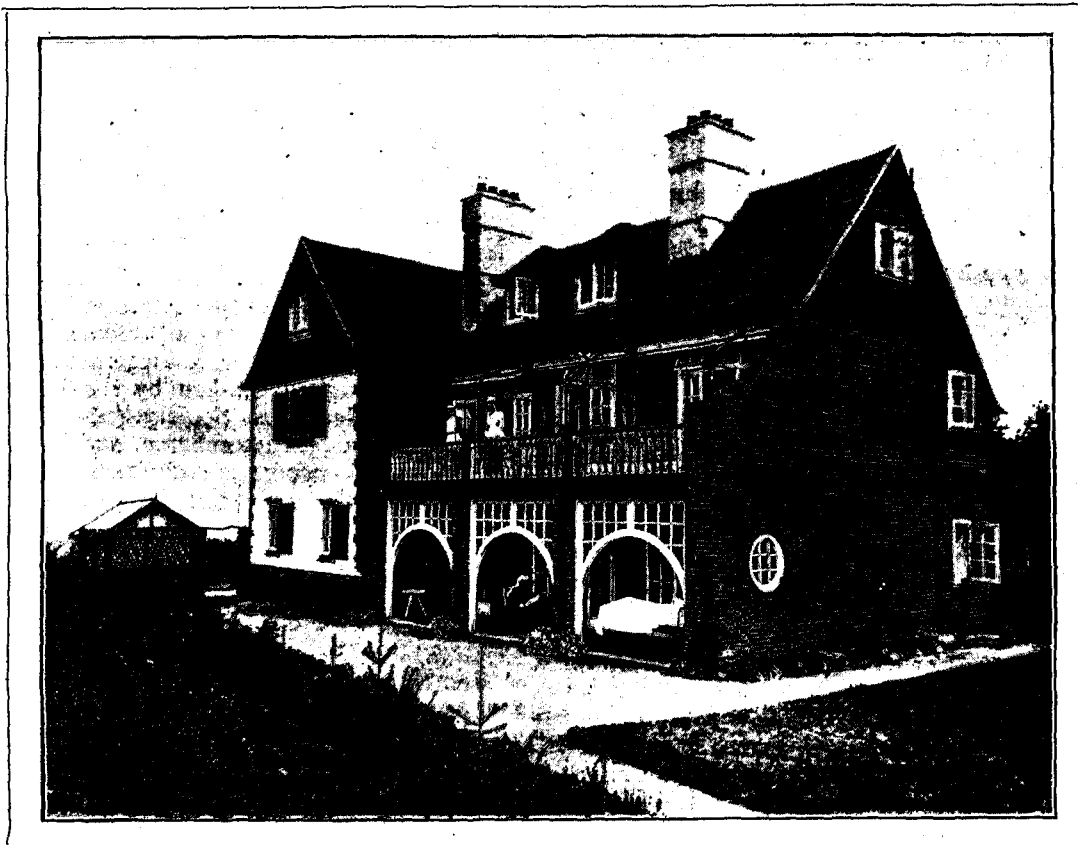
The Home was built for the purpose, and is situated amidst the most beautiful scenery, 850 feet above the sea level.

Forests of pine trees, heaths covered with bracken, heather, gorse, and cranberry bushes,

all parts to receive the treatment, together with the benefit of the bracing air.

The Sister in charge and one of the nurses are both nurse-masseuses and electricians, and all the other nurses are chosen for the special requirements of the Home and cases.

The Dowsing radiant heat and light baths have proved particularly beneficial to cases of neuritis, all forms of rheumatism, and skin, and kidney cases. The bath consists of a comfortable bed, surrounded by specially made reflectors, thus diffusing and projecting the electric heat on to the body (which is covered in),



The Hindhead Nursing Home, Surrey.

distant views of Frensham, Aldershot, and the Surrey hills, bring joy and hope to the patients arriving at the home for treatment and rest.

An operating theatre; an electrical department fitted up with the Dowsing radiant heat and light baths, high frequency and vibrator; verandahs and Boulton sheds complete all the requirements for surgical, medical, nerve, and convalescent cases.

Cases of pulmonary tuberculosis, and mental and infectious cases are not admitted.

The electrical department is quite a feature of the Home, as many nerve cases arrive from

a regulator controlling and ensuring heat up to 400 degs. Fahr.

The projecting reflectors can be covered with different coloured glass such as red, green, or blue, should the doctors order them.

The Home is open to all the profession, and the greatest London specialists send their patients to it where they are under the care of physicians and surgeons of high standing.

There are ten private wards, drawing-room, and lounge, apart from the verandahs and sheds where the patients lie and take their meals in the open air.

[previous page](#)

[next page](#)